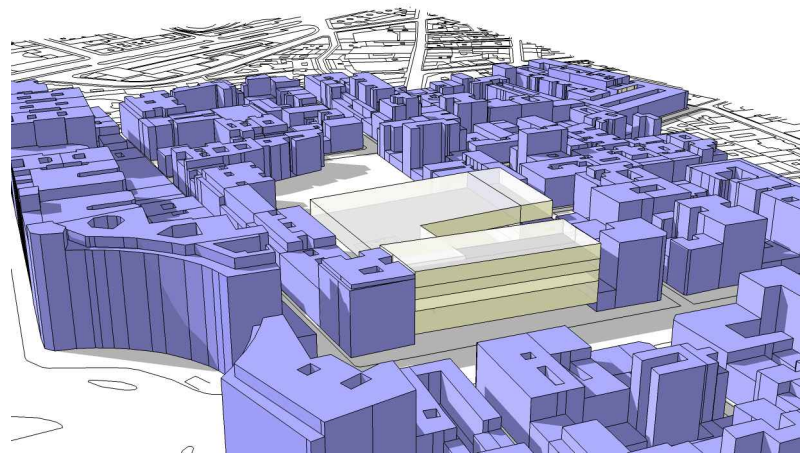




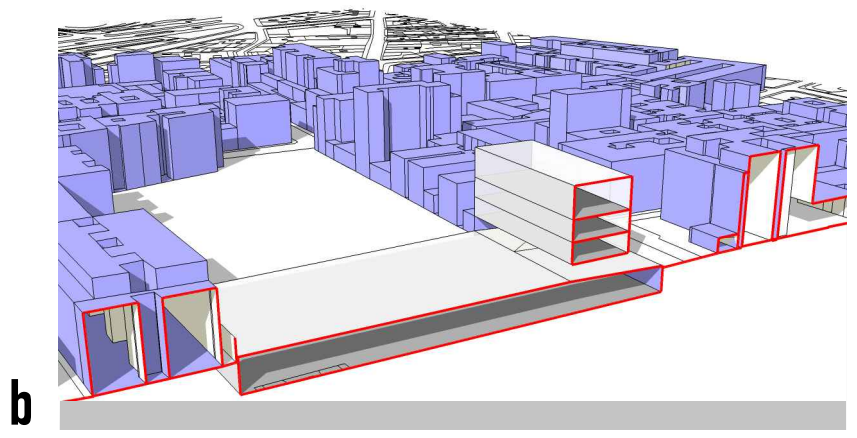
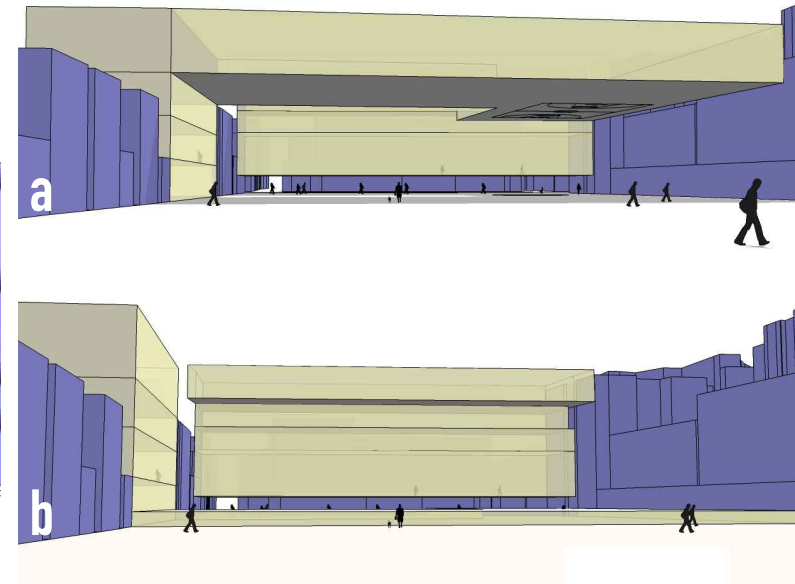
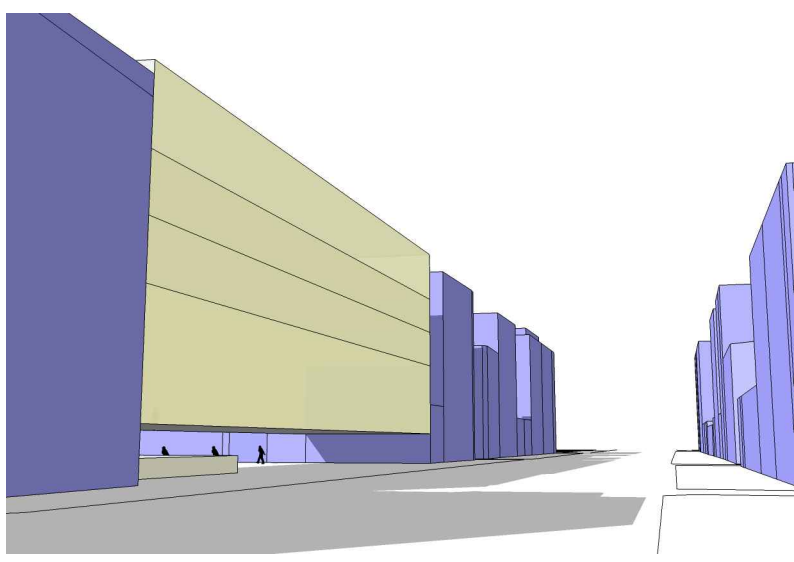
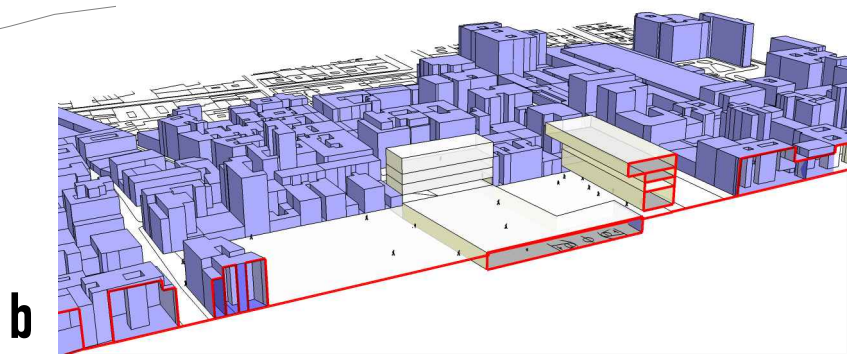
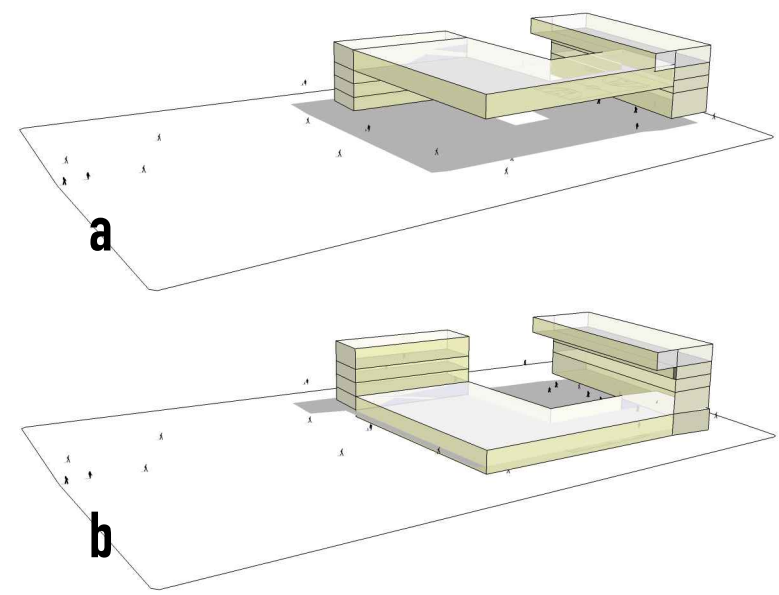
17.04.06 PROPUESTAS SOLAR  
 PFC. PABLO REY MAZÓN. ESCUELA FP.  
 CICLOS F. SUPERIOR. DISEÑO  
 ILUSTRACIÓN GRABADO

todas las medidas en metros

superficie manzana	19256	
m <sup>2</sup> construidos pfc:	5908 bloques	(+ 3042 L)
m <sup>2</sup> ocupados pfc:	1590	8,2%
Superficie libre:	10410	54,0%
Edificios preexistentes:	7256	37,68%
nº de plantas:	5	



PM 1





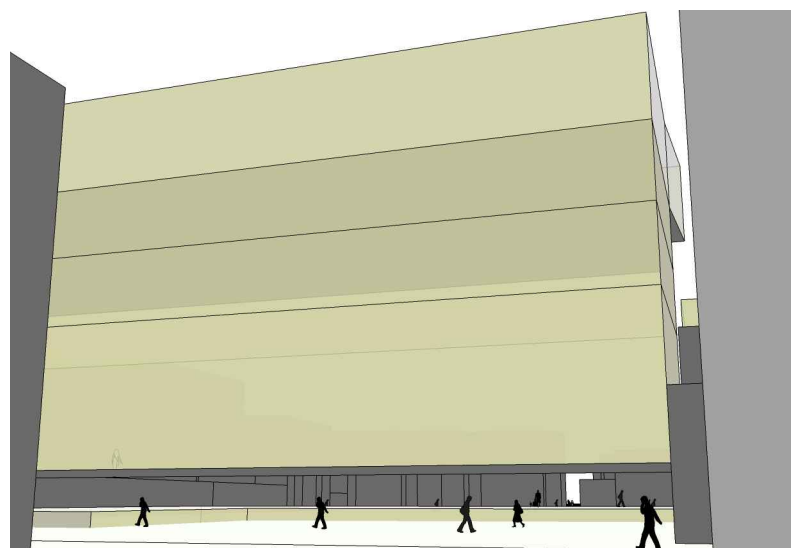
PM 2



E + PM



vista calle topete



vista bravo murillo